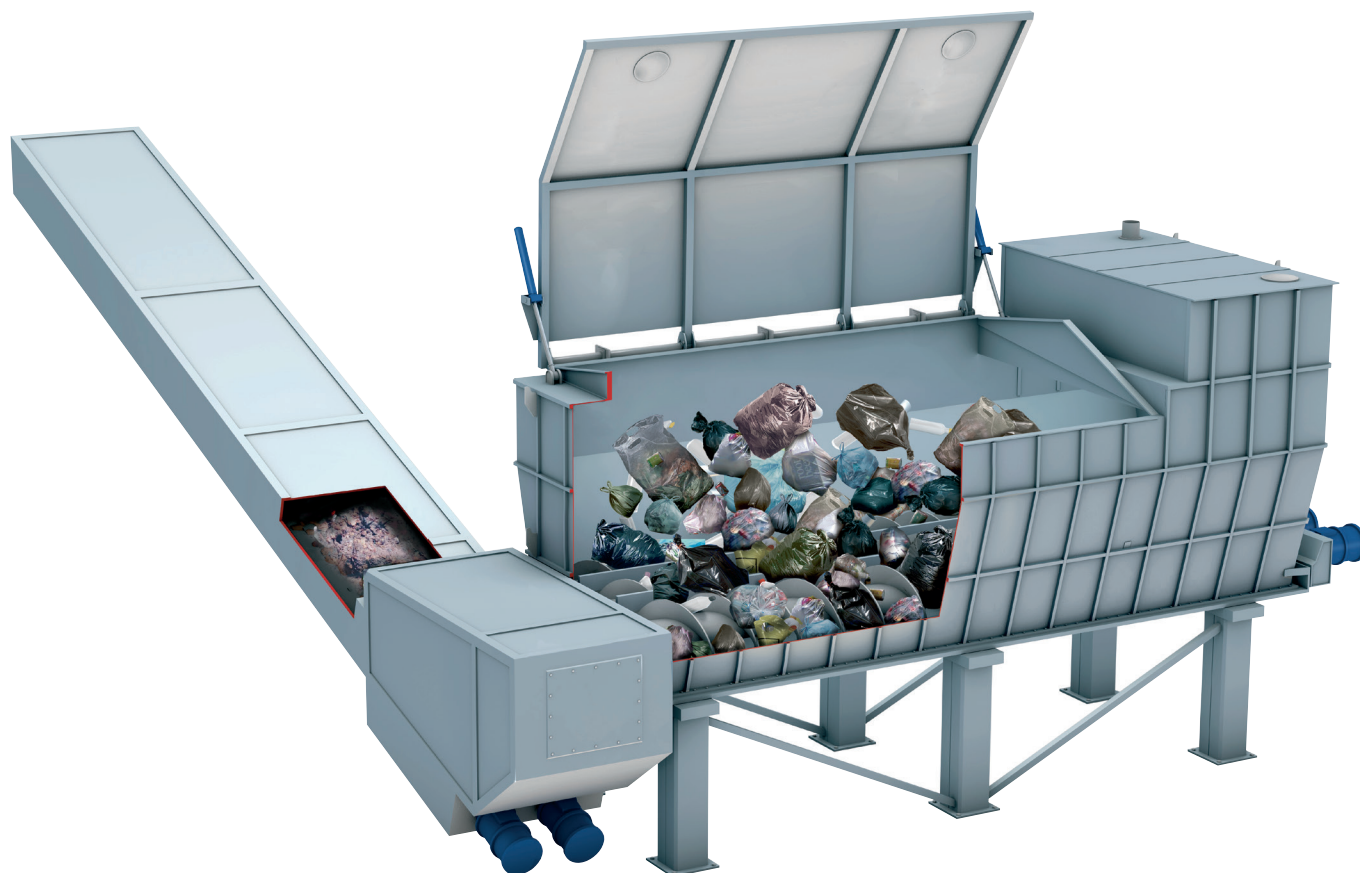


RECEIVING UNIT



The Läckeby Products receiving unit is used for receiving, homogenization and further transport of waste material. The design is based on our wide experience of transporting all kinds of materials. The receiving unit is designed to fit the customer's need as well as the type of received waste material and the vehicles that delivers it.



Before homogenization



After homogenization

Technical design

- Solid construction that withstands heavy loads
- Several bottom screws
 - Operationally safe with several electrical motors
 - Large capacity for unloading
- Hatch
 - Integrated hatch specially designed for adaption to the dumping vehicles
 - Minimized splashing to the surroundings
- Custom-designed
 - Efficient use of the building
 - Integrated unit for further transport of the waste
- Material
 - Stainless or acid proof steel
 - Spiral of carbon steel or stainless steel

Process advantages

- Minimized maintenance
- Reversible screws for perfect mixing
- Reliable operation

Applications

- All types of waste that need to be processed and/or homogenized before further transport

Function

The waste is dumped into the unit. The hatch prevents accidents as well as odour. It closes automatically and gives a signal to the screws in the bottom of the unit to start the homogenization sequence. The waste is fed backwards in the unit by the screws, which ensures good mixing. The screws and the driving mechanism are dimensioned for the most demanding waste in the process, thus to avoid shutdowns during the homogenization. Water flushing can be integrated into the process to obtain an even better working environment and safer operation. After the homogenization the waste is transported to the next step by an integrated conveyor.

Design

The Läckeby Products receiving unit is designed for heavy waste. Several individually driven bottom screws of carbon steel ensure a good mixture of all kinds of waste. The receiving unit is made of stainless or acid proof steel and designed to fit the customer's requirements regarding volume, space limits and dumping vehicles. The hatch is provided with hydraulic cylinders for opening and closing.



Dumping of household waste in a receiving unit from Läckeby Products.

References

Läckeby Products offers customized designs that give the customer a flexible and operationally safe solution. We have experience of installations in various types of household and slaughter-house wastes.

Läckeby Products offers in-house development, design and production of receiving units. Coordinated competence and production results in high quality of service and delivery. Läckeby Products can participate already in the planning stage and take responsibility for the whole project from dimensioning to installation. By our involvement in the planning stage we can offer a total process guarantee.

LÄCKEBY PRODUCTS

Contact details:

Phone: +46 480-770 100
www.lackebyproducts.com

Visiting address:

Kalmar | Torsåsgatan 5F | SE 392 39 Kalmar | Sweden
Kungälv | Bultgatan 28 | SE 442 40 Kungälv | Sweden
Lund | Emdalavägen 10 | SE 221 05 Lund | Sweden